



PREMIER

Gold Mines Limited

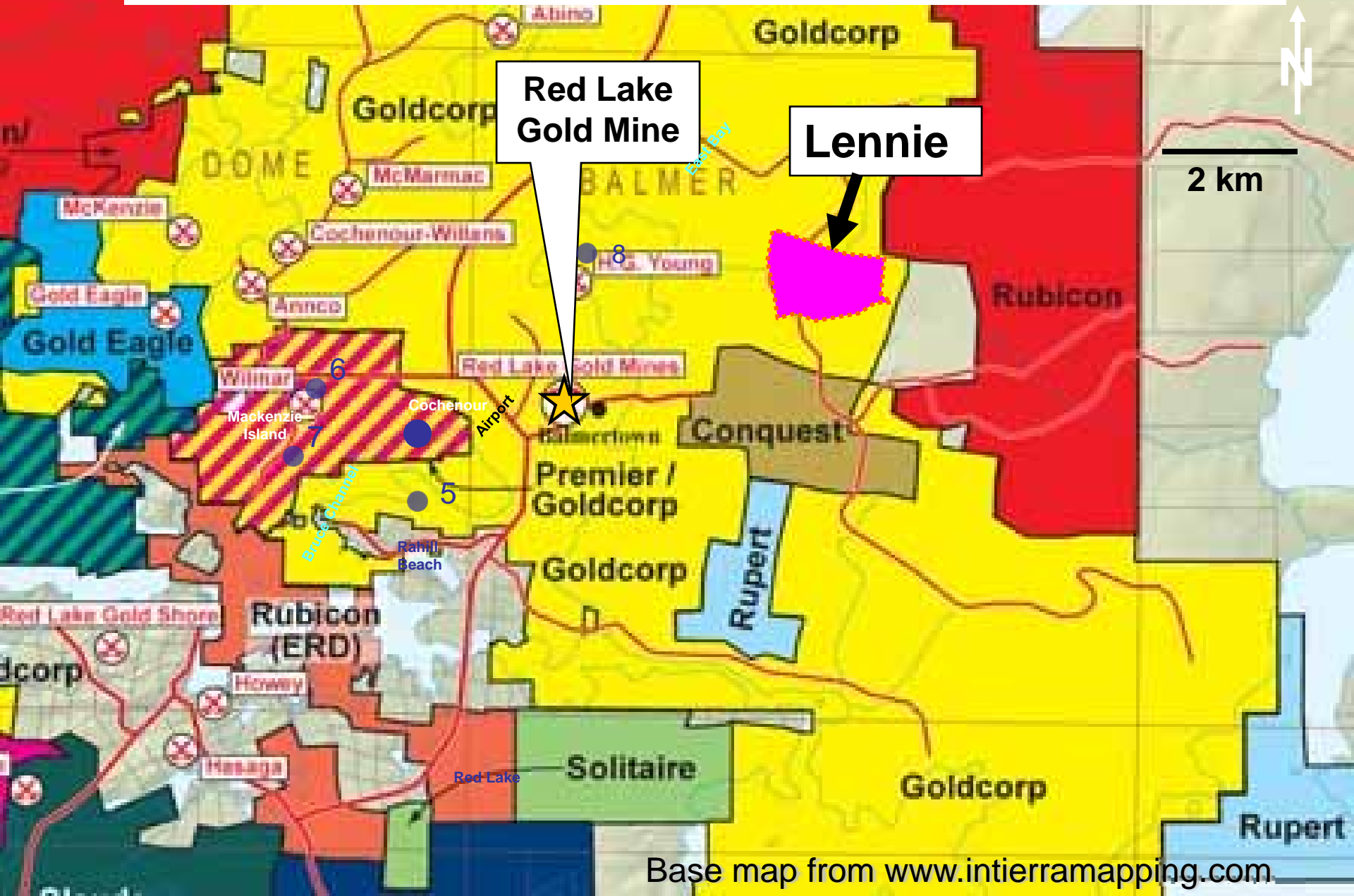
A World Of Opportunity

LENNIE PROJECT

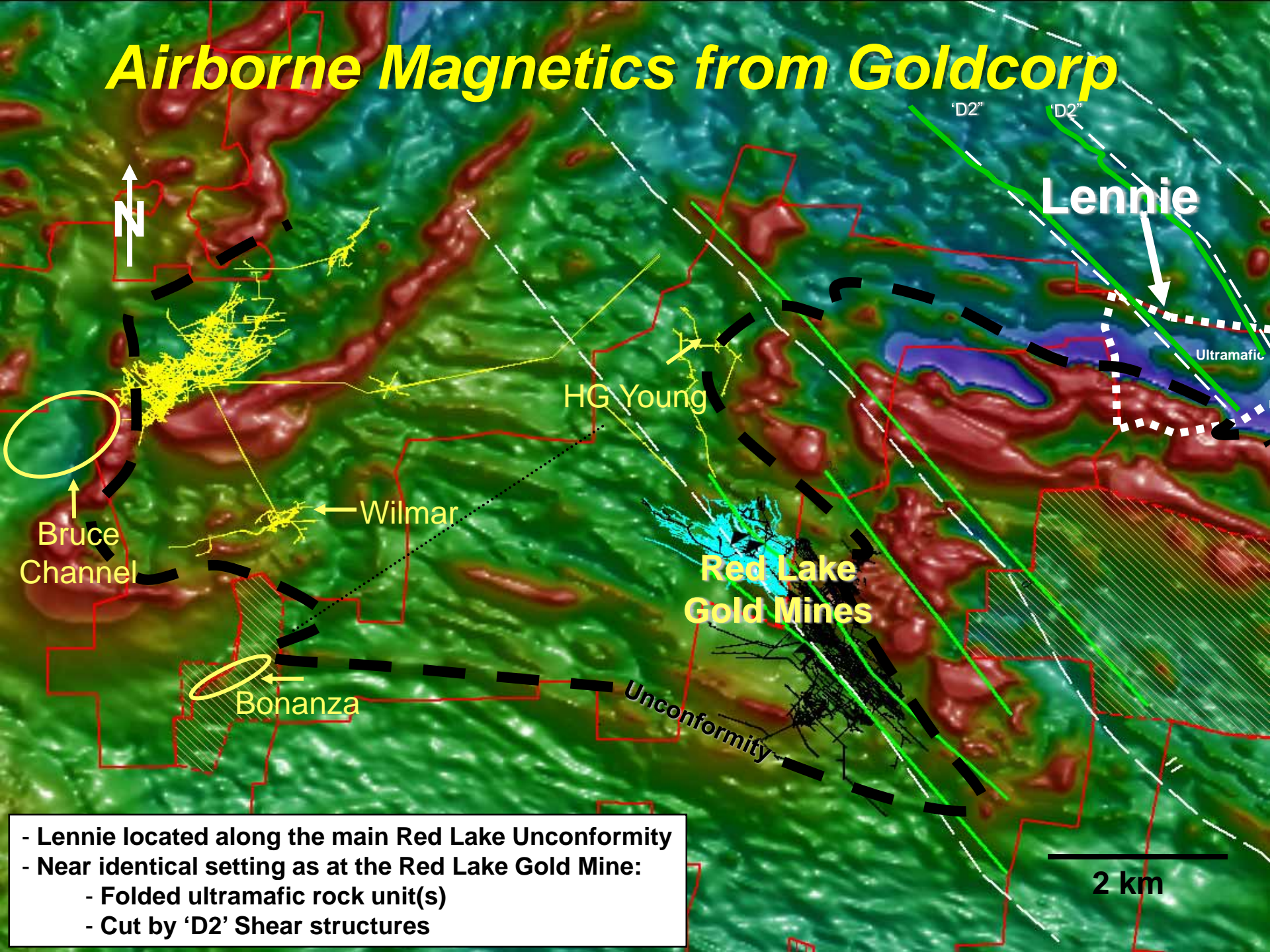
Red Lake, Ontario

New acquisition – 100% owned

2008 Red Lake Properties map

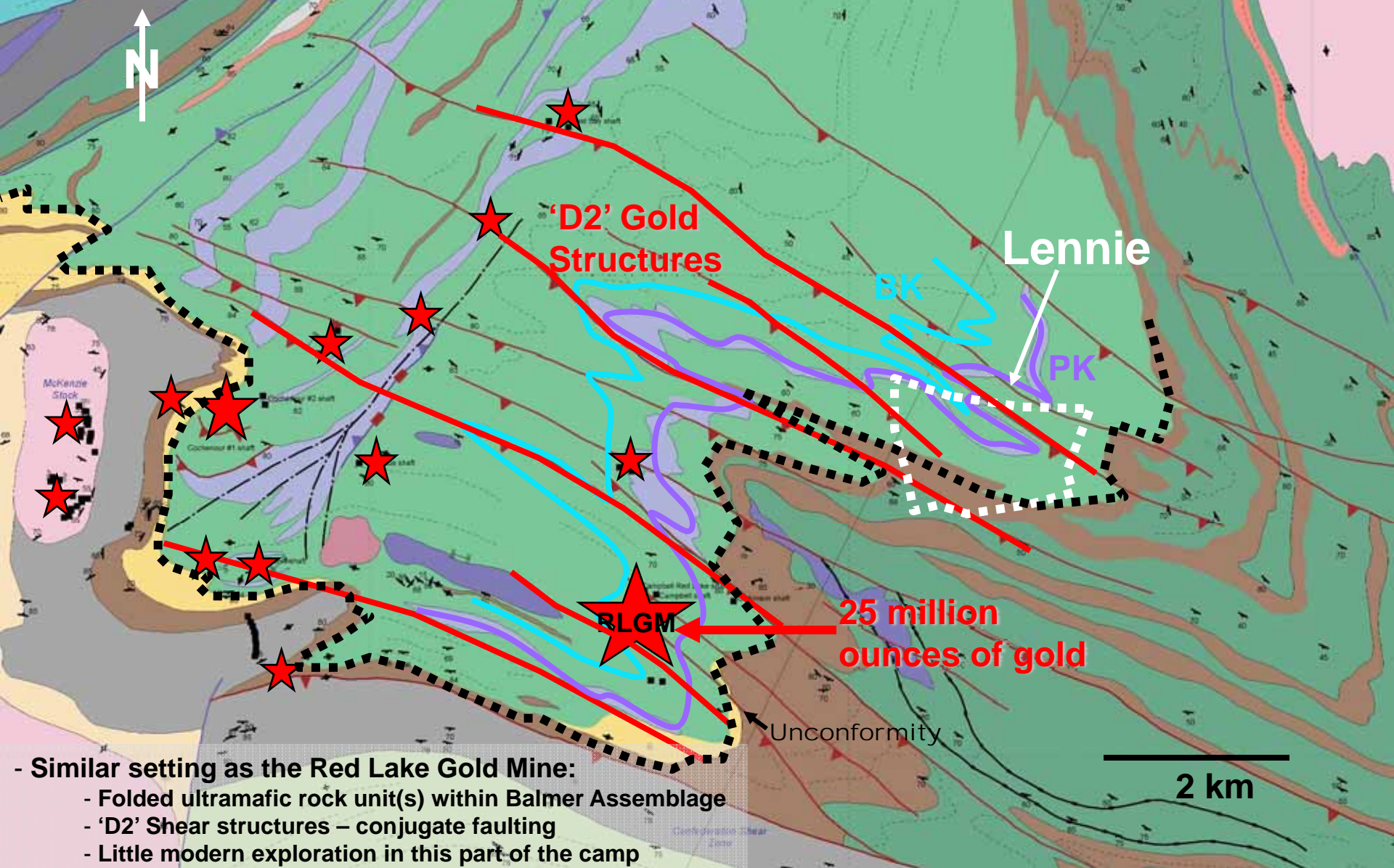


Airborne Magnetics from Goldcorp



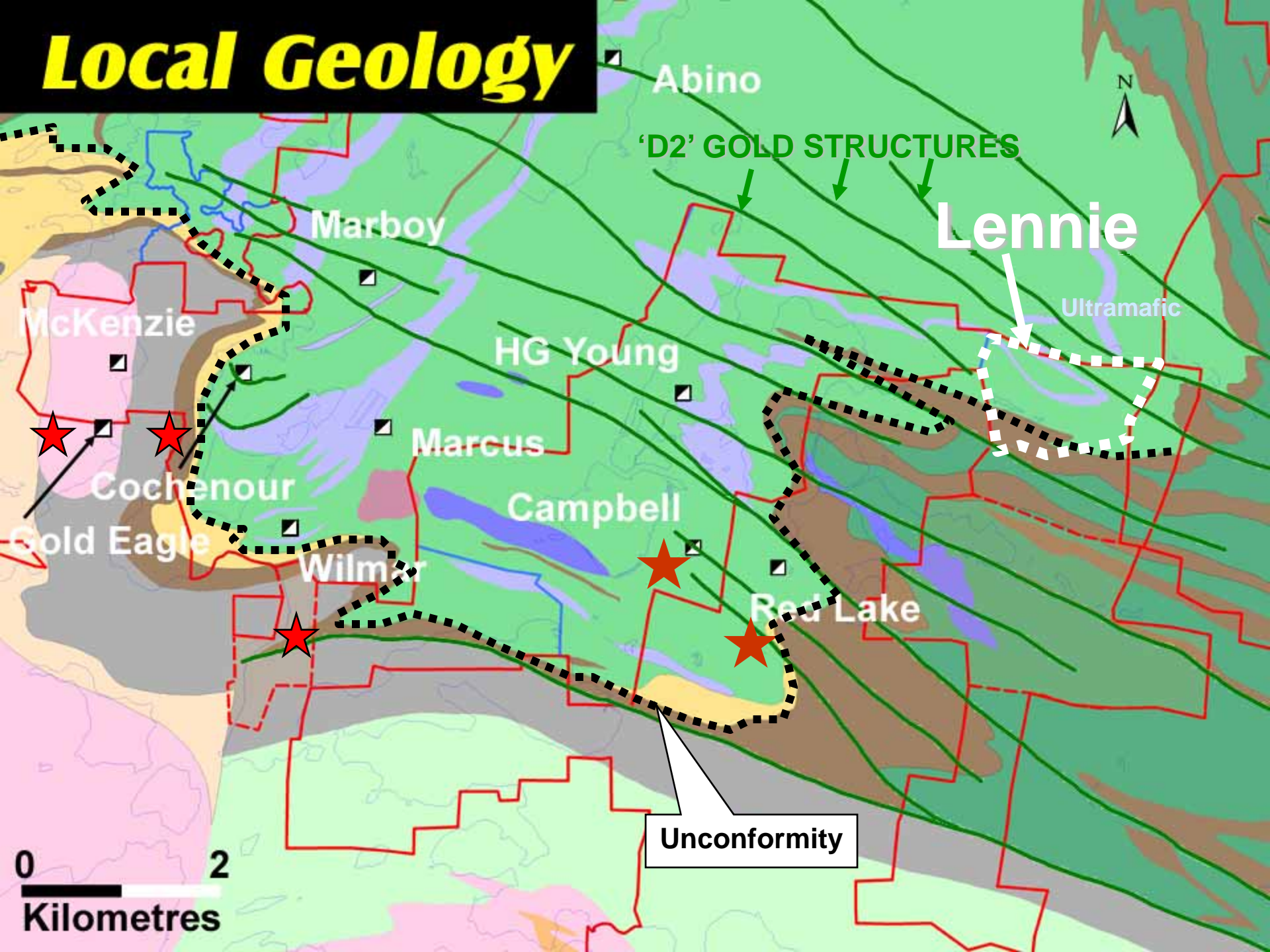
- Lennie located along the main Red Lake Unconformity
- Near identical setting as at the Red Lake Gold Mine:
 - Folded ultramafic rock unit(s)
 - Cut by 'D2' Shear structures

Applying Surface Exploration Concepts – 'D2' Faults in Basalt intersecting Ultramafics

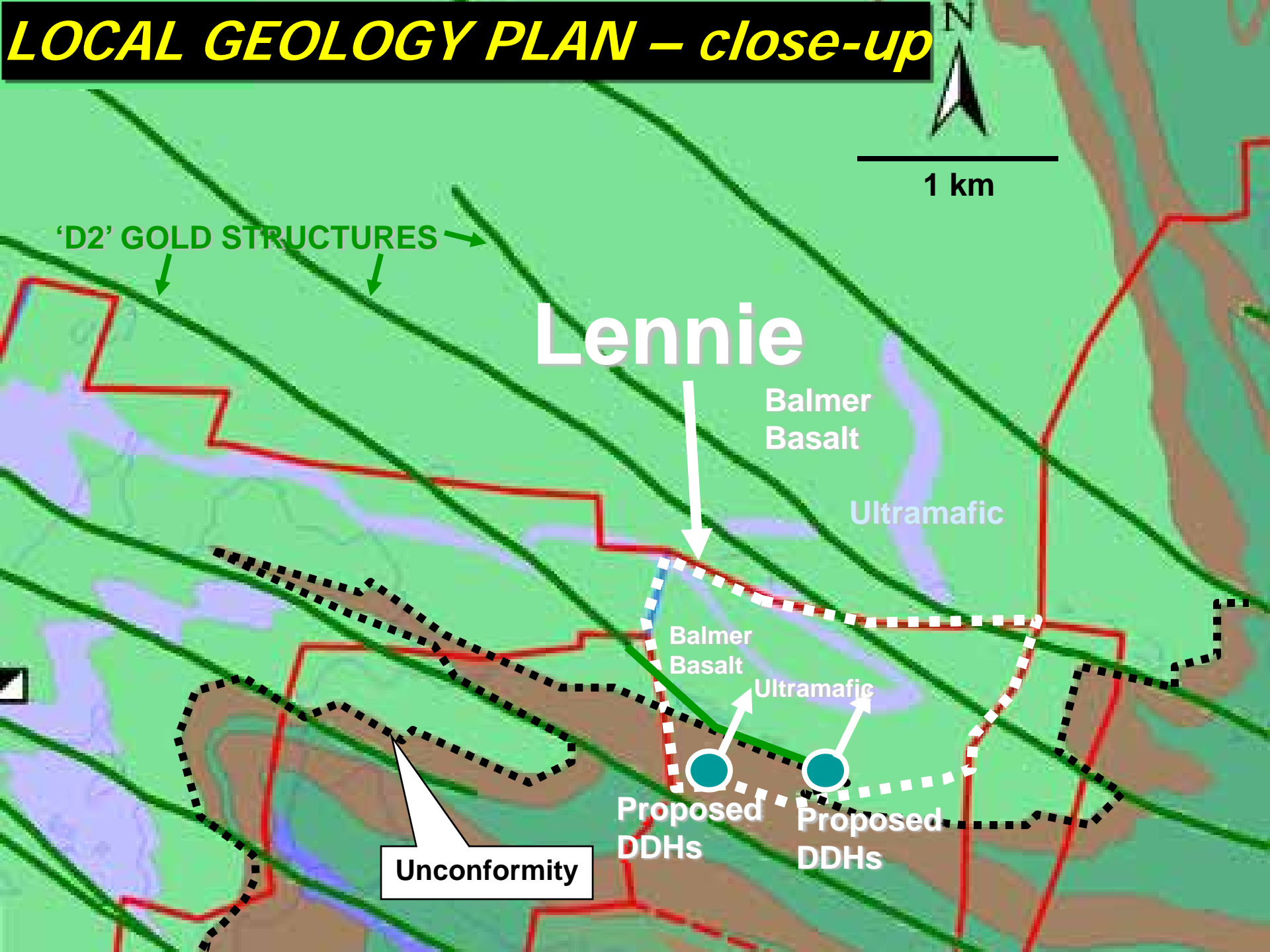


- Similar setting as the Red Lake Gold Mine:
 - Folded ultramafic rock unit(s) within Balmer Assemblage
 - 'D2' Shear structures – conjugate faulting
 - Little modern exploration in this part of the camp

Local Geology



LOCAL GEOLOGY PLAN – close-up



1 km

Lennie

'D2' GOLD STRUCTURES

Balmer
Basalt

Ultramafic

Balmer
Basalt

Ultramafic

Proposed
DDHs

Proposed
DDHs

Unconformity

CROSS-SECTION looking west – Proposed drilling

Lennie

Proposed
DDHs

Balmer Basalt

PK Ultramafic

BK Ultramafic

'D2' GOLD STRUCTURES

target

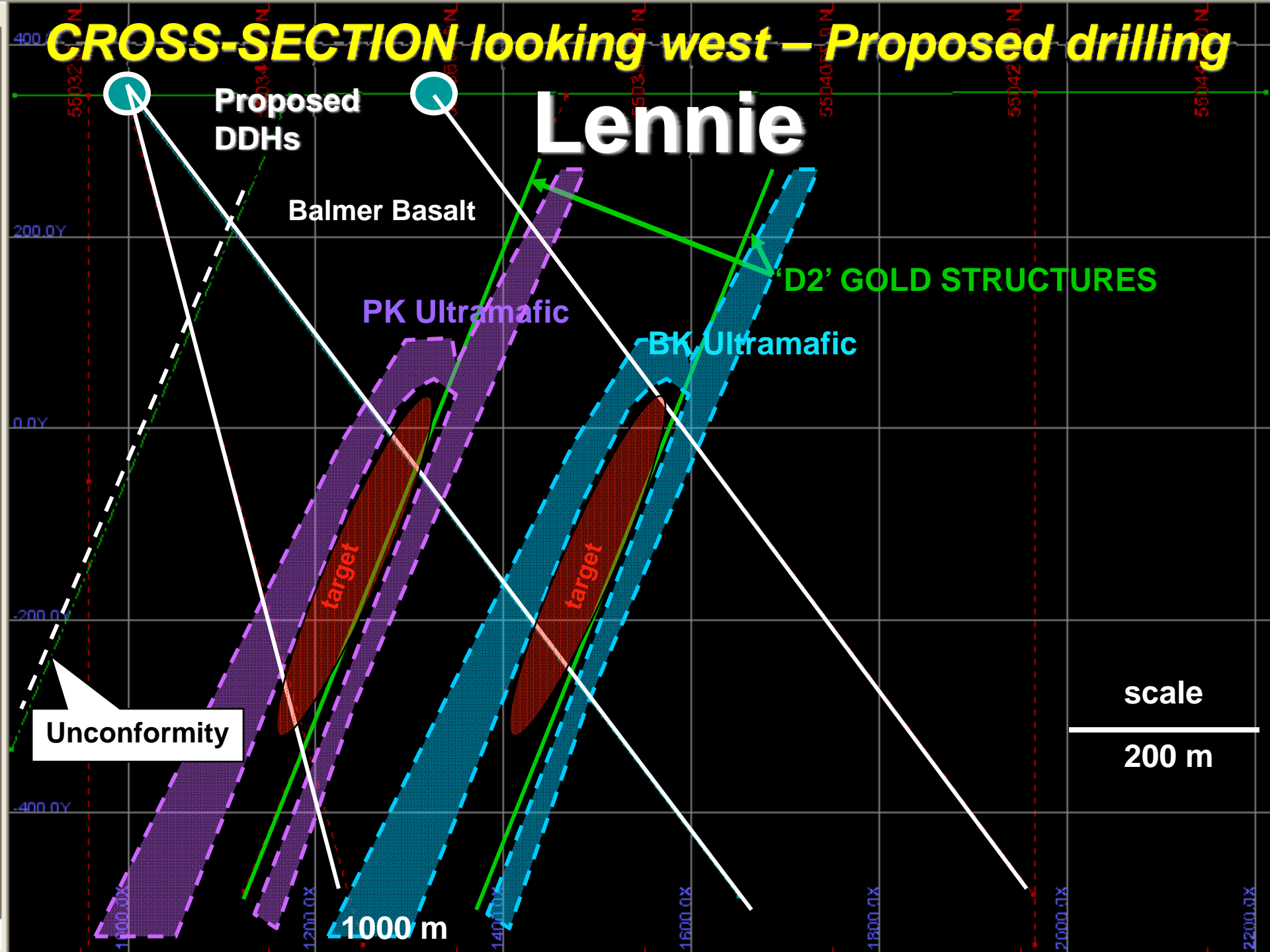
target

Unconformity

scale

200 m

1000 m





PREMIER

Gold Mines Limited

A World Of Opportunity

Premier offers excellent value exposure to Red Lake Gold

TWO KEY LAND PACKAGES

STRATEGIC LOCATIONS:

- **Rahill-Bonanza and Lennie** projects are strategically located in the heart of the Red Lake gold camp proximal to Goldcorp's prolific Red Gold Mine and the Bruce Channel Discovery Zone.
- Gold Eagle was recently taken-over by Goldcorp for \$1.2 Billion.

TWO GOLD DEPOSITS:

- The past-producing Wilmar Gold Mine that had a production grade in excess of 10 g/t Au.
- The Bonanza gold deposit contains a +900,000 oz gold resource.

100% OWNED LENNIE PROJECT:

- Near identical geological setting to that at the Red Lake Gold Mines operation.

RED LAKE GOLD DISTRICT

