



# ***Premier Gold Mines Limited***

## ***The Look of Opportunity***

**Symbol: PG**

**Exchange: TSX**

**[www.premiergoldmines.com](http://www.premiergoldmines.com)**

This presentation may contain forward-looking statements that may involve a number of risks and uncertainties. Actual events or results could differ materially from the Company's expectations or projections.

# ***Premier - Who are we ?***

- A junior exploration & development company
- Focus is gold
- Rely on “risk capital”
- Winners & losers



# *Premier - Why Invest ?*

- Worldwide gold production is falling
- New resources & reserves scarce
- Seniors look to juniors to grow reserves
- Juniors significantly undervalued

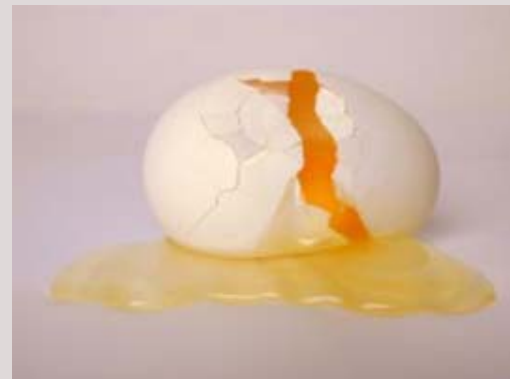


# ***Strategy for Success***

***“Aggressive exploration in proven districts will repeatedly reward our shareholders” - PG Home Page***

- Proven Districts
- Proximal to current or past producers
- Properties are accessible
- Geopolitically safe jurisdictions

***Minimize risk!***



TSX : PG



# ***Strategy for Success***

***“Aggressive exploration in proven districts will repeatedly reward our shareholders” - PG Home Page***

- Successful management team
- Strategic properties & alliances
- Aggressive exploration

***Positioned for  
reward!***



TSX : PG



# ***Premier - Quick Facts***

- TSX trading symbol: PG
- 69.2M shares outstanding
- Current market cap ~ CAD\$150M
- Daily volume/3M rolling avg: 200,000 shares
- Working capital: ~CAD\$12 million
- Goldcorp Inc. + Inmet Mining = 25% of shares
- Premier management & insiders = 6% of shares



# ***Successful Management Team***

- **Ewan Downie, President & CEO**

- 2004 PDAC Prospector of the Year Award – High Lake West
- Sold Wolfden Resources for \$360 million in 2007

- **Stephen McGibbon, Exec VP & COO**

- 23 years Goldcorp Inc.
- Senior Member HGZ Discovery team;

- **Tim Twomey, Exploration Manager**

- 14 years Goldcorp Inc.
- Senior Member HGZ Discovery team;



# *Strategic Properties*



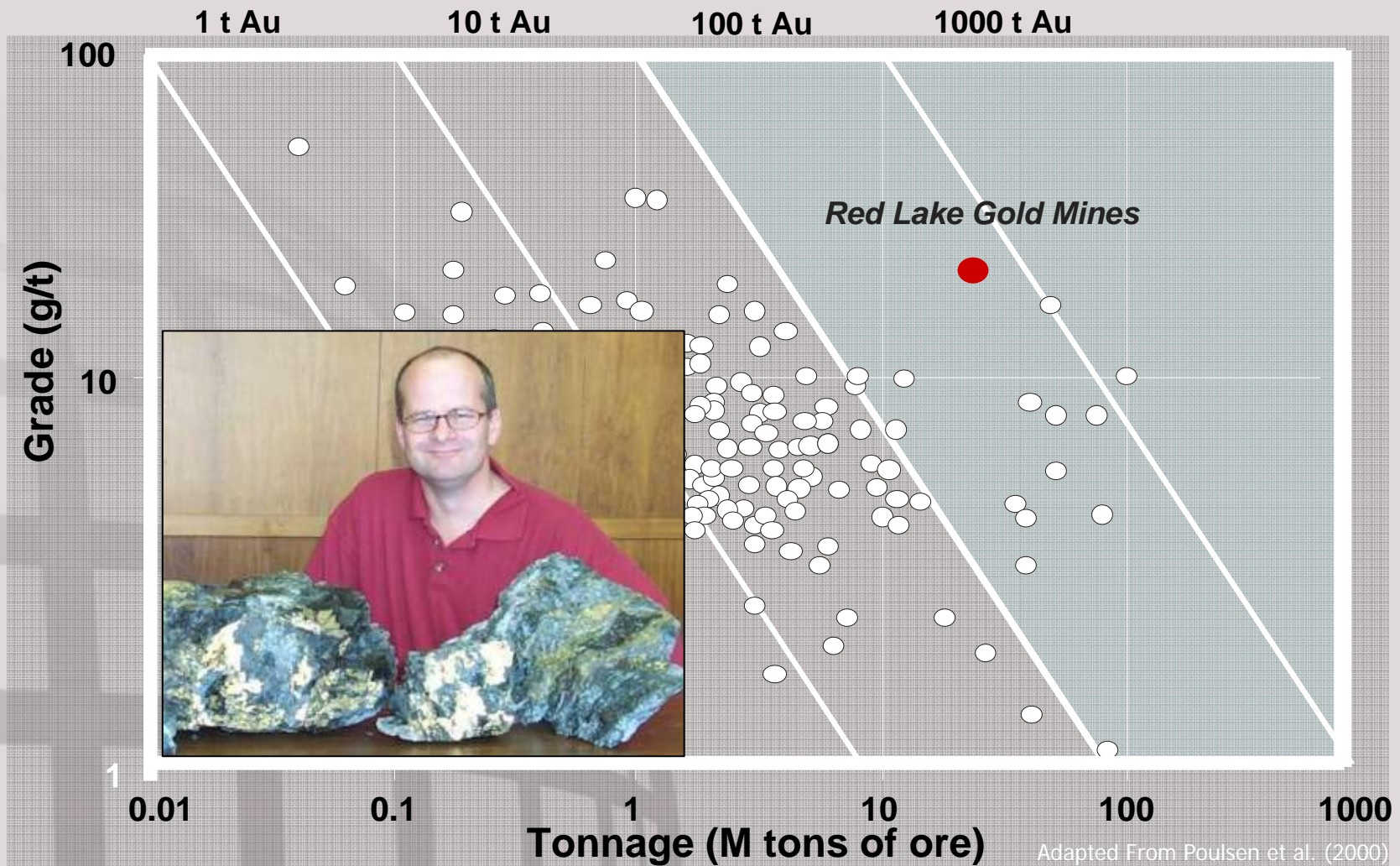
**Red Lake District  
Rahill-Bonanza Property  
(49% PG:51% G)  
"The Mine Trend Project"**

TSX : PG

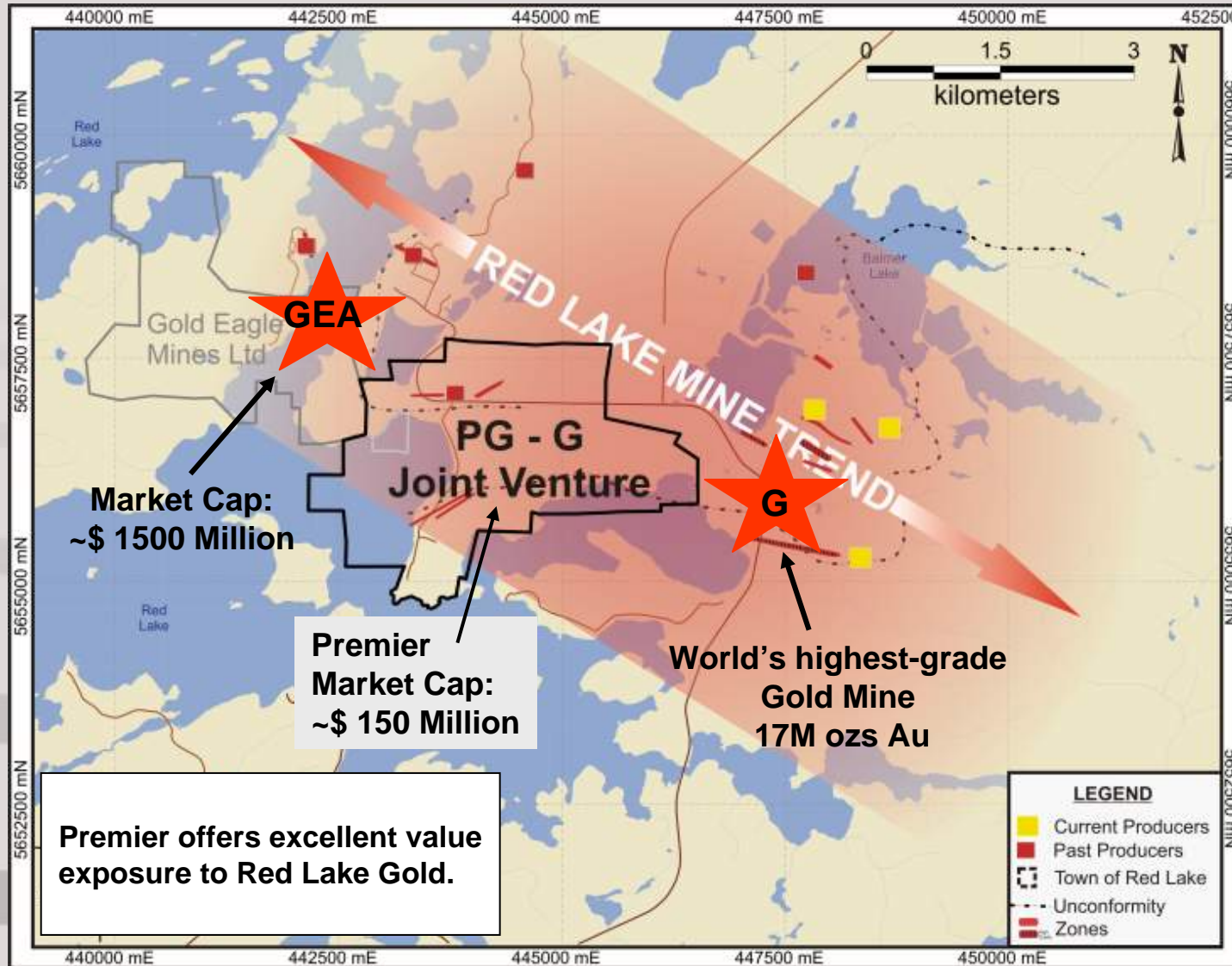


# Flagship is Red Lake

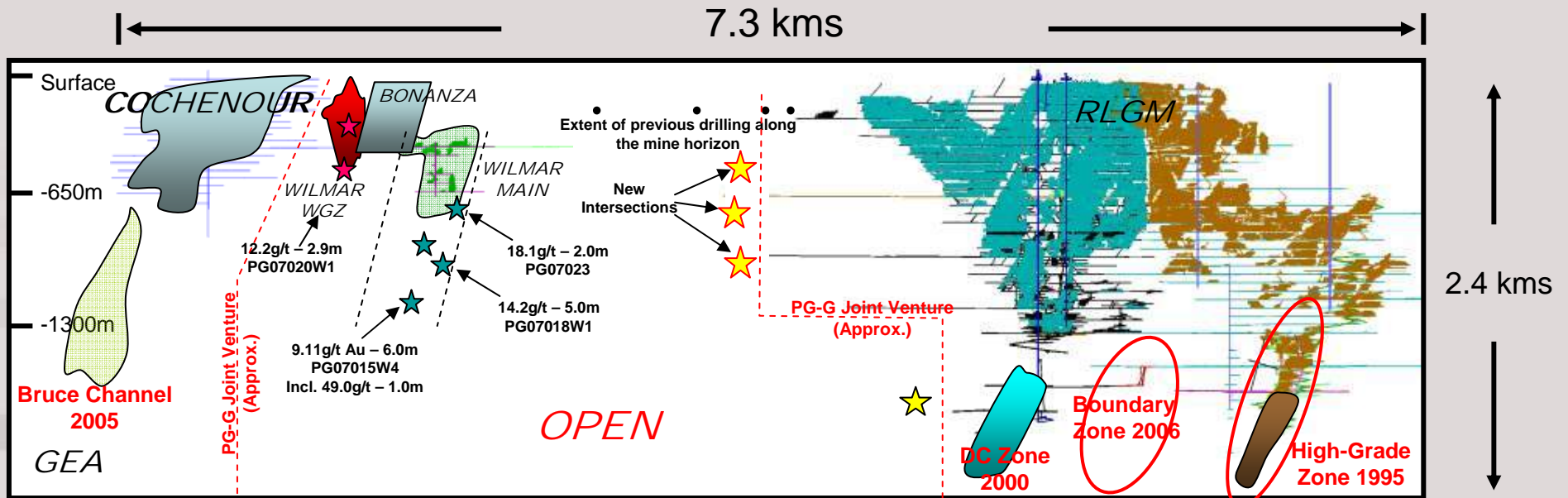
*World's Premier High-Grade Gold Camp*



# *Between Two High Grade Discoveries*



# Mine Trend Potential



- ★ Current drilling program
- ★ Intersection - Wilmar Main Zone
- ★ Intersection - West Granodiorite Zone

Longitudinal Section  
Looking Northeast

**“Mine Trend” discoveries total more than 30 million ounces of Au & growing**

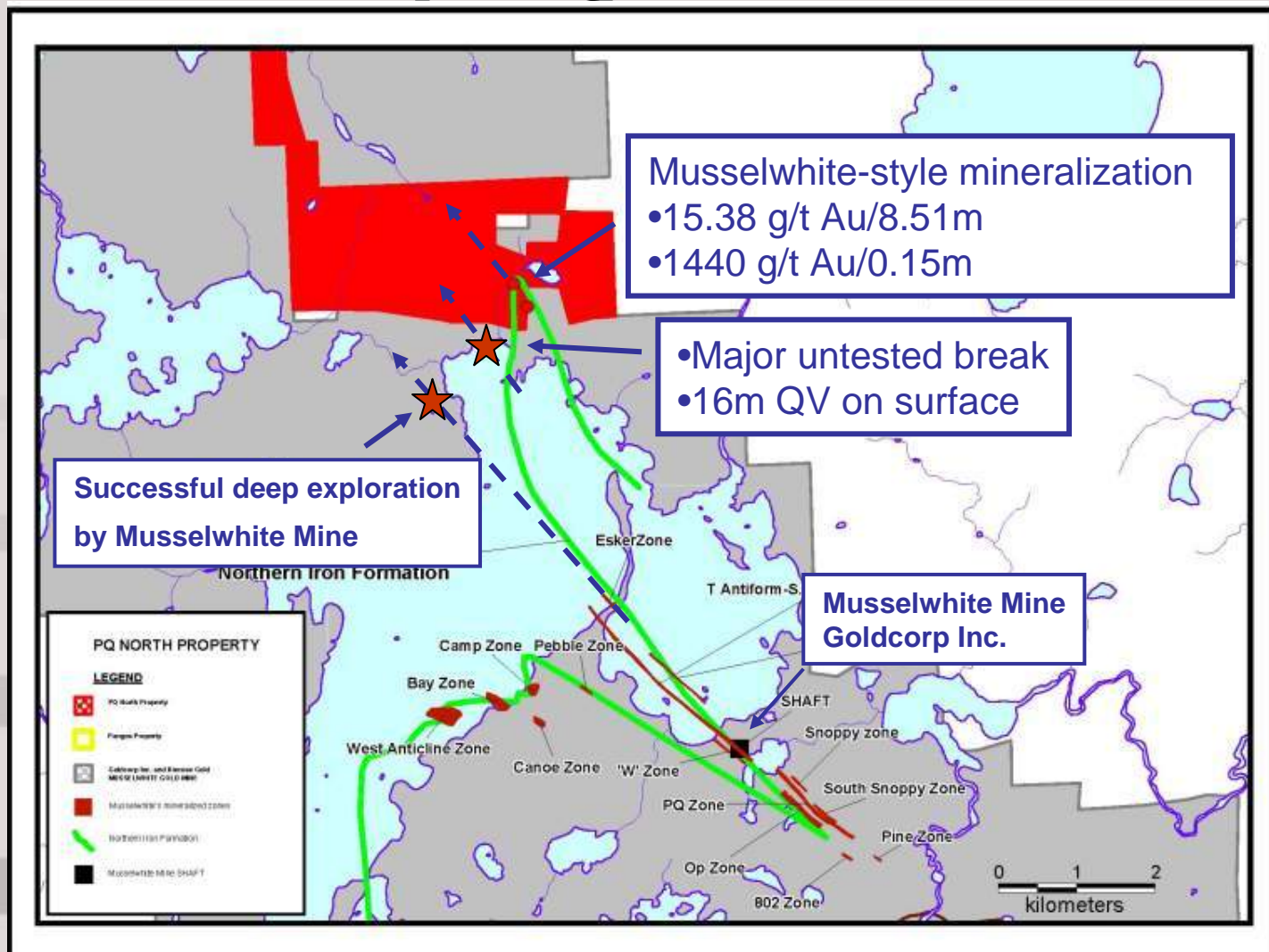


# ***PQ North Property***

- Located adjacent to multi-million ounce Musselwhite Gold Mine; +200,000 ounce / year production
- Known zone on property open for expansion.
- Major zone of quartz veins remain untested.
- PQ North likely hosts down-plunge extensions of several of the mine ore zones.
- Diamond drilling in Q4 of 2008.



# PQ North Property



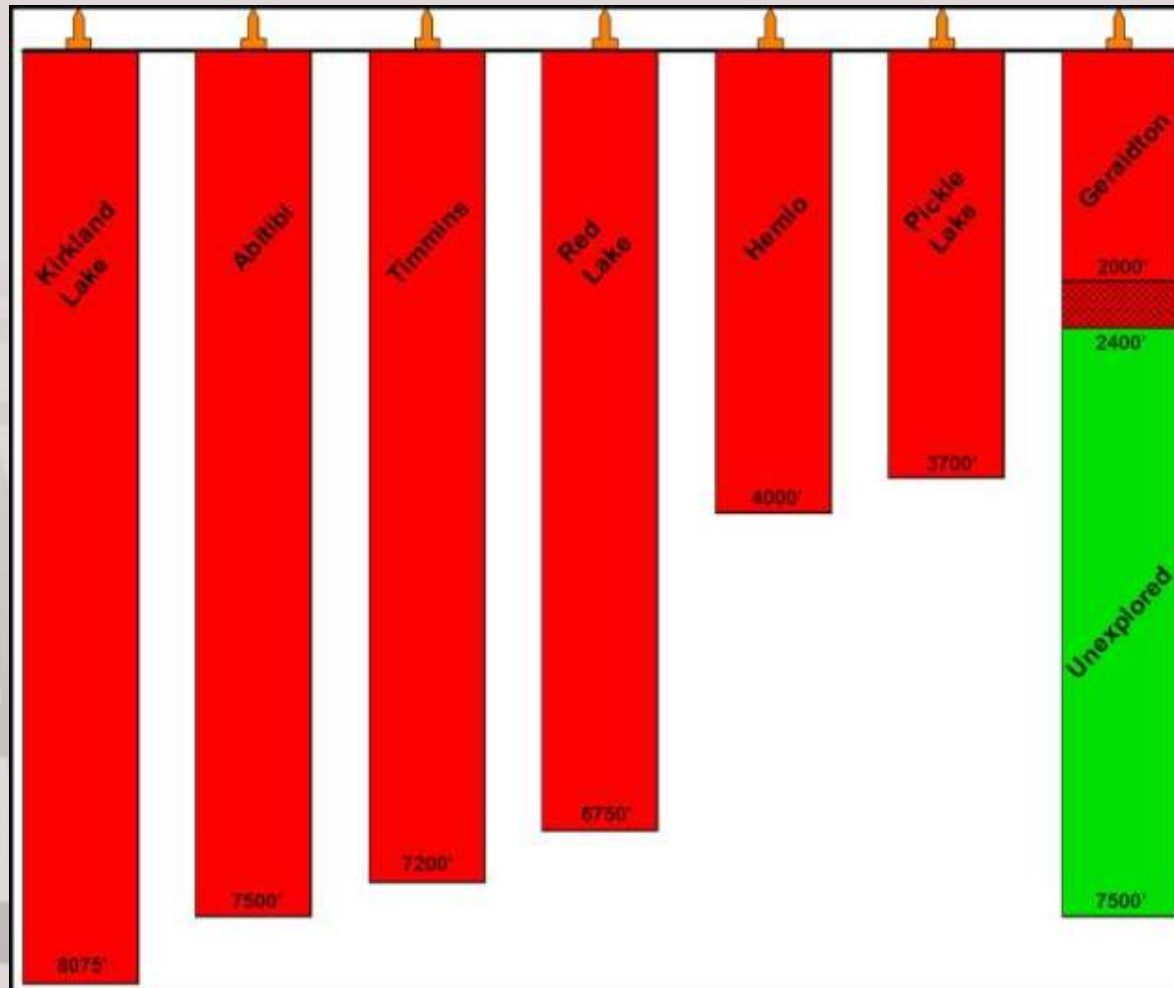
# ***Geraldton Project***



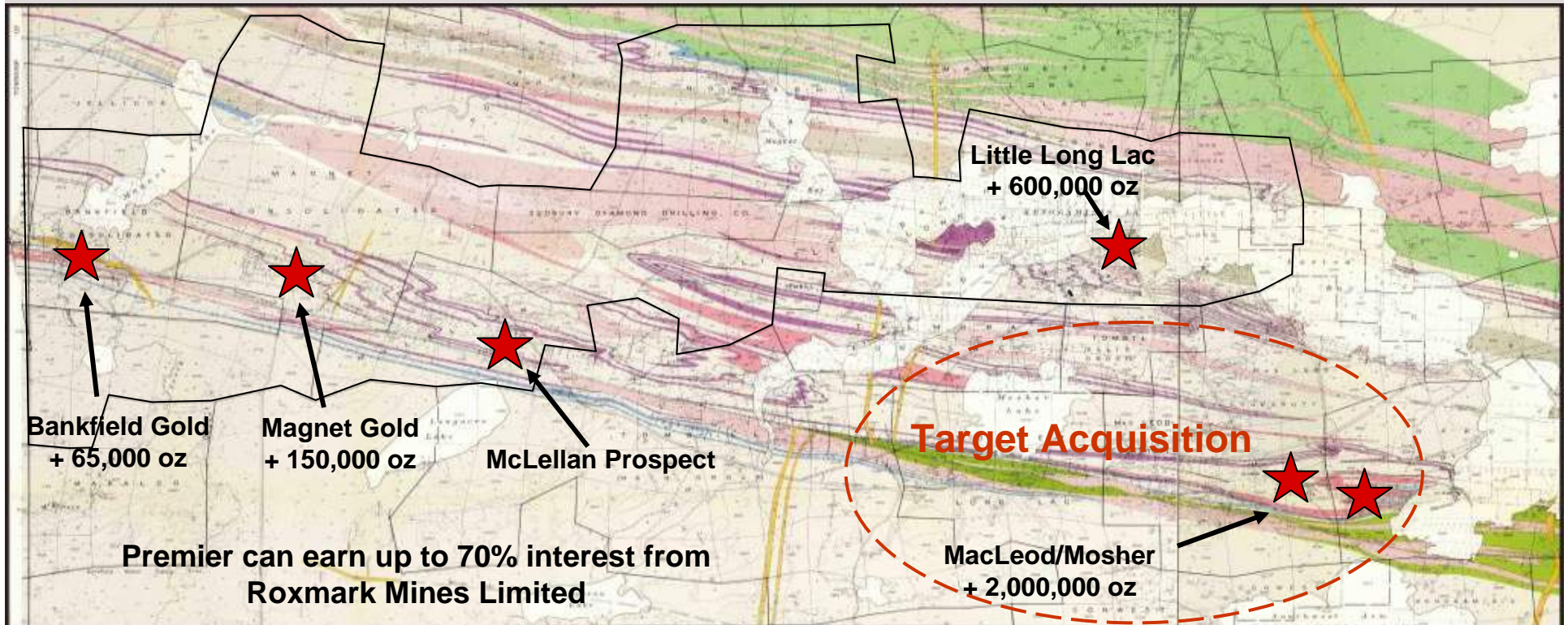
- **Located within the full service community of Geraldton**
- **High grade gold mining history**
- **Access to natural gas, rail, major power line & Trans-Canada Hwy.**
- **Significantly underexplored**



# *Depth Potential Within Entire District*



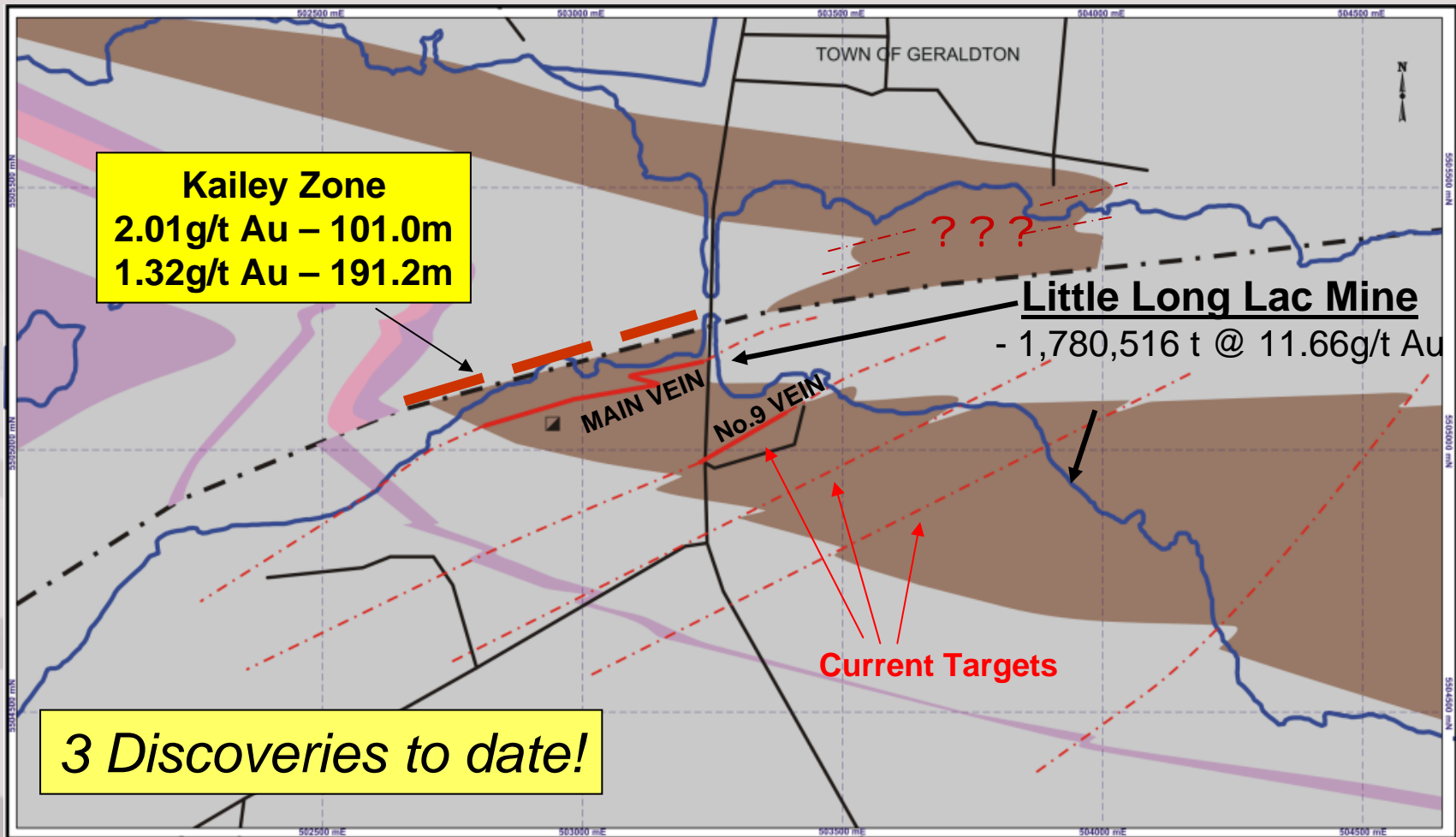
# *Renewed Interest Near Surface*



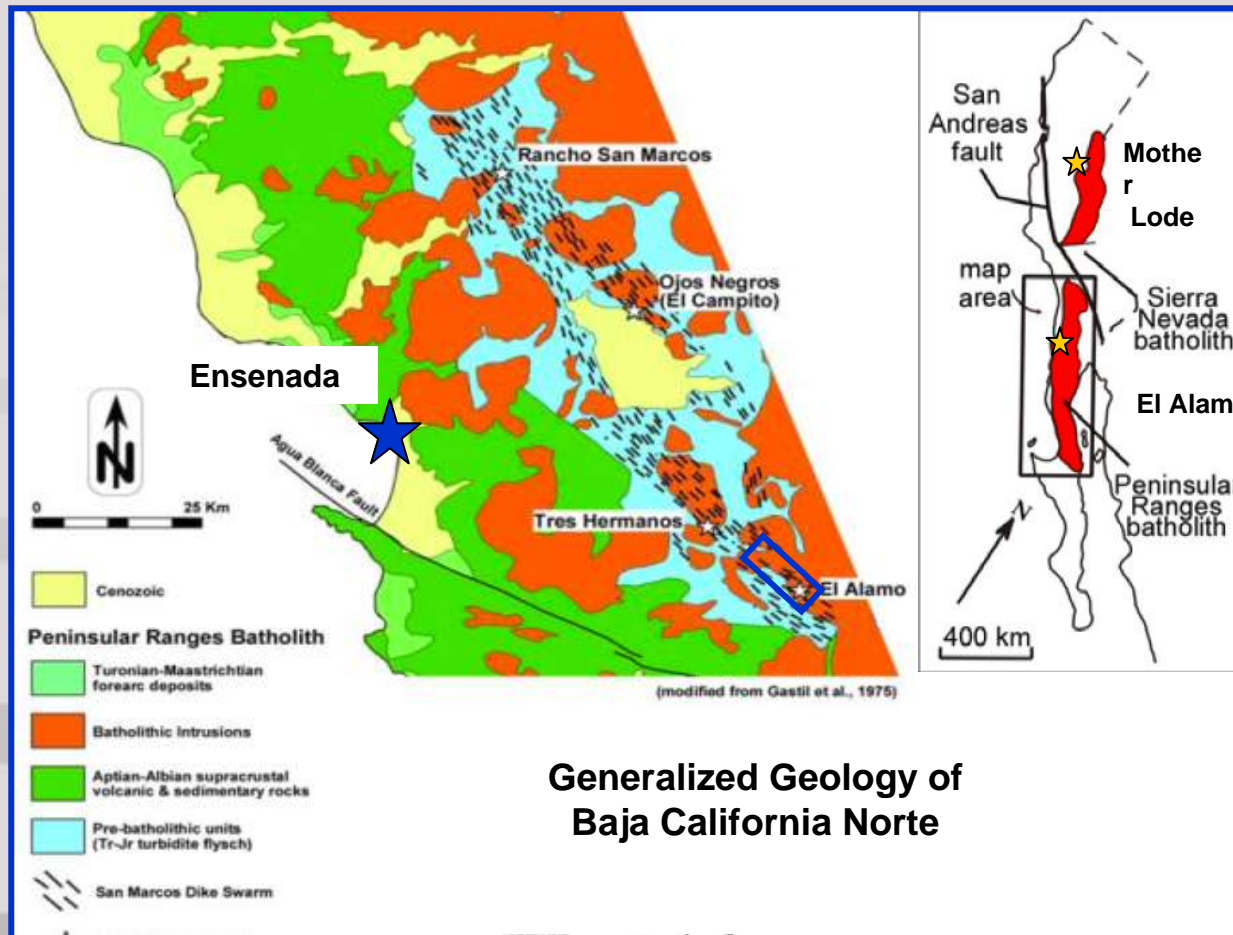
- Property is host to 3 high-grade past producing mines (1950's)
- More than 4 Million ounces of gold production in the District
- Little exploration in 50 years



# *New Discoveries Near Old Mines*



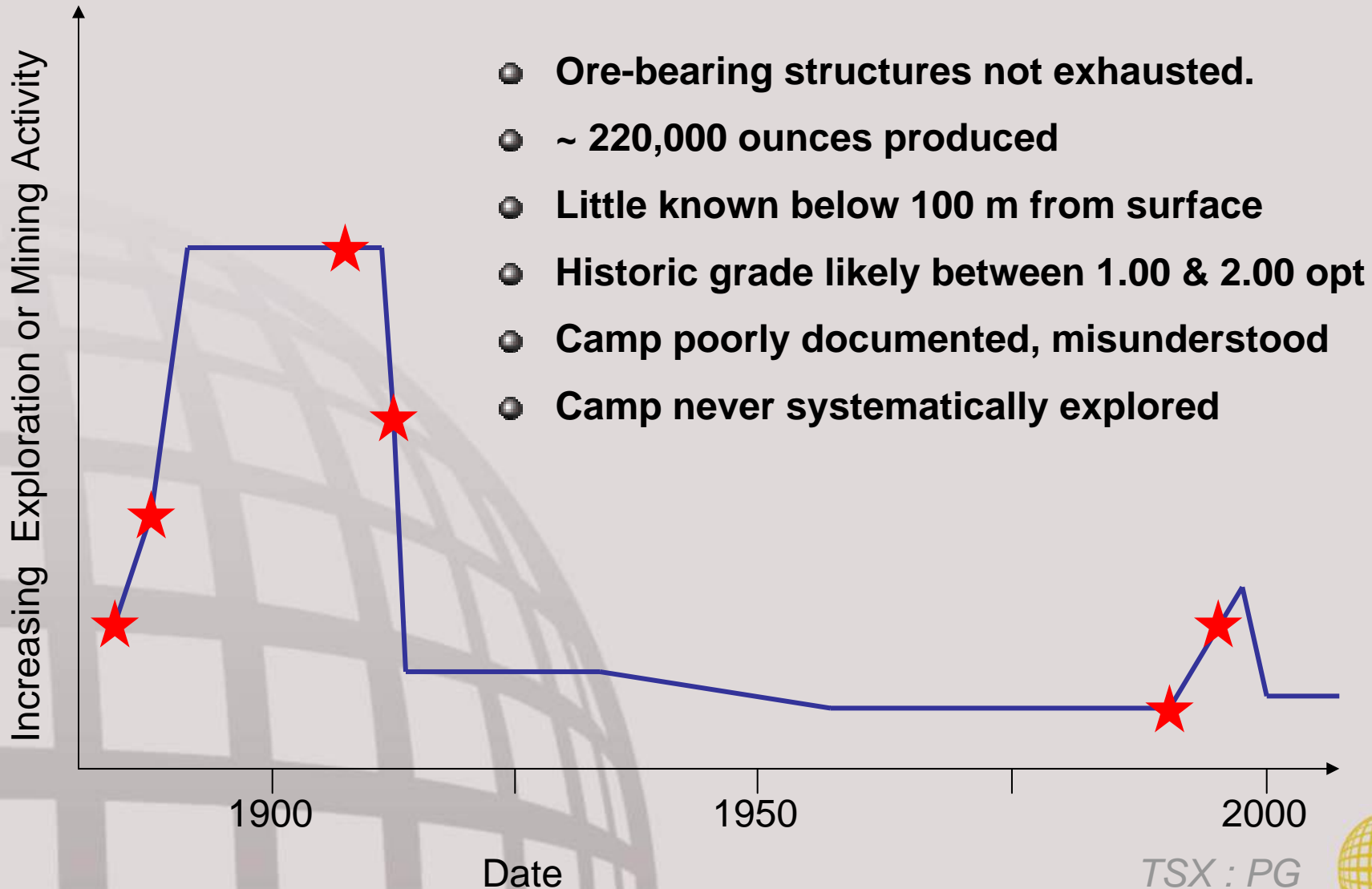
# *Santa Teresa Property, Mexico*



- El Alamo mining district
- 90 kms from Ensenada
- Similarities to Mother Lode District in California
- Geopolitically safe
- Premier to earn up to 65% interest



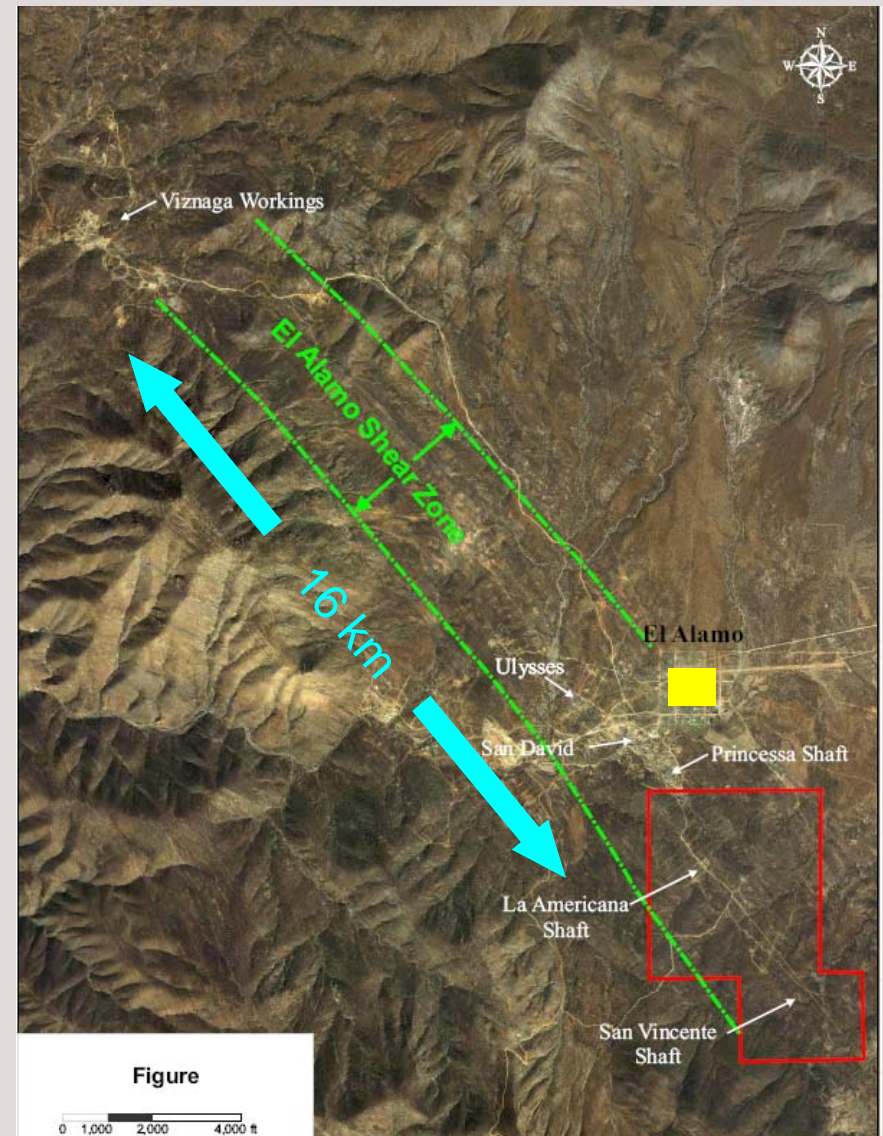
# Summary of El Alamo District



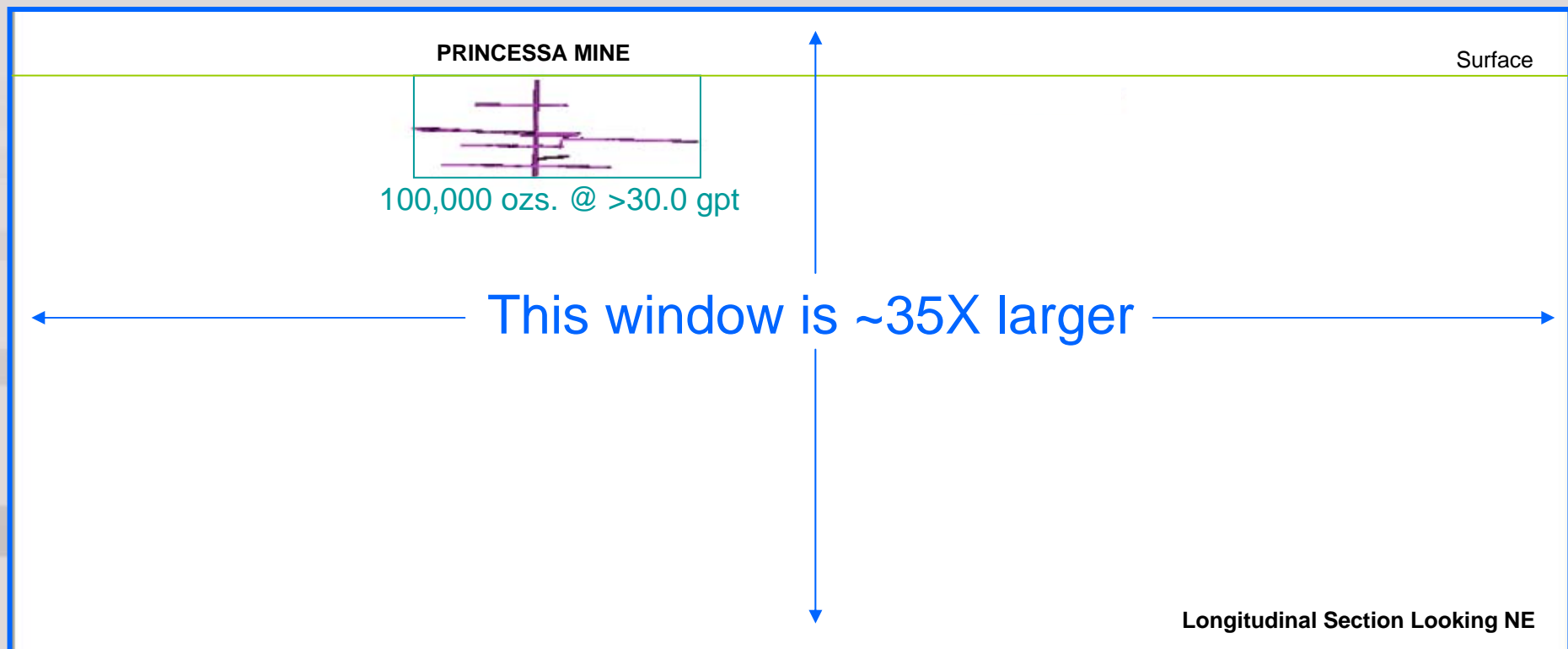
# *The Santa Teresa Property*

## *The facts:*

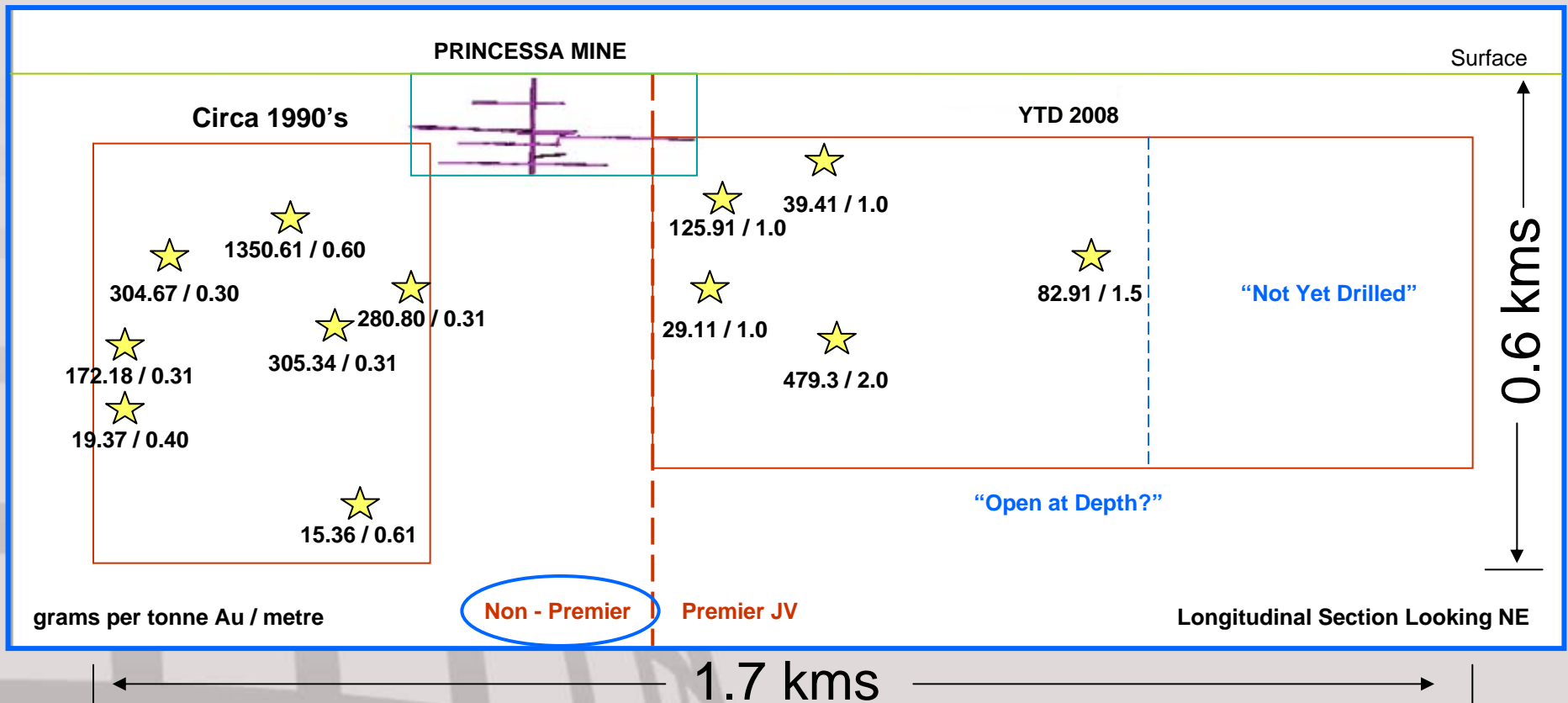
- Adjacent to largest & deepest past producer (>100,000 ozs & 120m)
- Princessa Mine plunges shallow to SE
- Veins trace mineralization along strike on surface
- Untested by modern exploration methods
- No diamond drilling on property



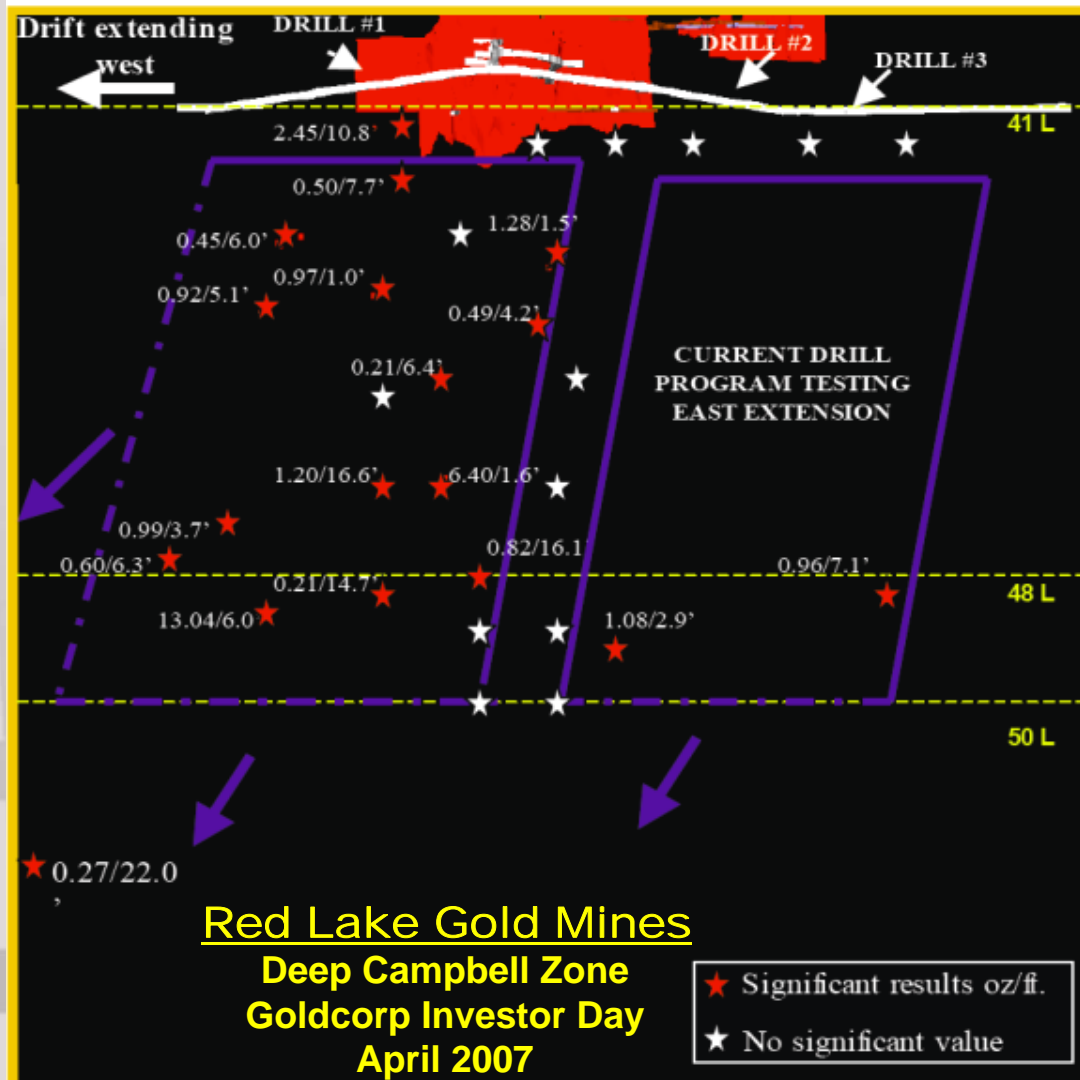
# *The Look of Opportunity*



# The Look of Opportunity



# The Look of Opportunity



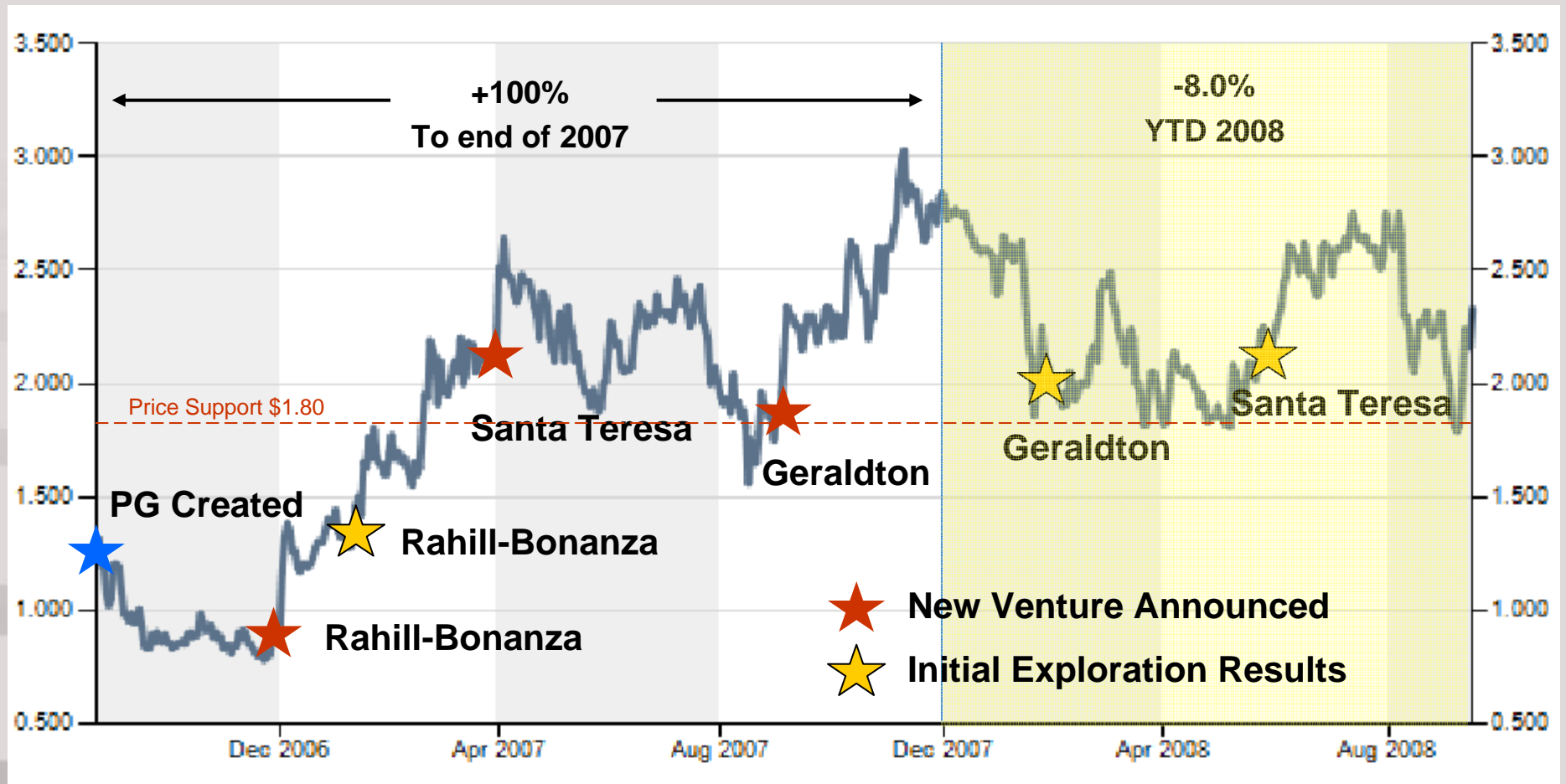
## Santa Teresa Results

Hole-ID	Length (m)	AU (g/t)	Length (ft)	AU (opt)
ST001	1.2	26.19	3.9	0.76
ST002				
ST005	1.0	5.93	3.3	0.17
	2.0	479.31	6.6	13.98
ST006	1.5	82.91	4.9	2.42
ST007	1.0	14.55	3.3	0.42
	1.2	13.90	3.9	0.41
	1.0	17.04	3.3	0.50
ST008	1.0	33.87	3.3	0.99
	1.0	39.41	3.3	1.15
ST012	1.0	29.11	3.3	0.85
ST013	1.4	6.73	4.6	0.20
	1.0	125.91	3.3	3.68
	3.2	6.89	10.5	0.20
	1.0	18.84	3.3	0.55

Similar grades and widths as other world class high grade districts – example is the Red Lake Mine!

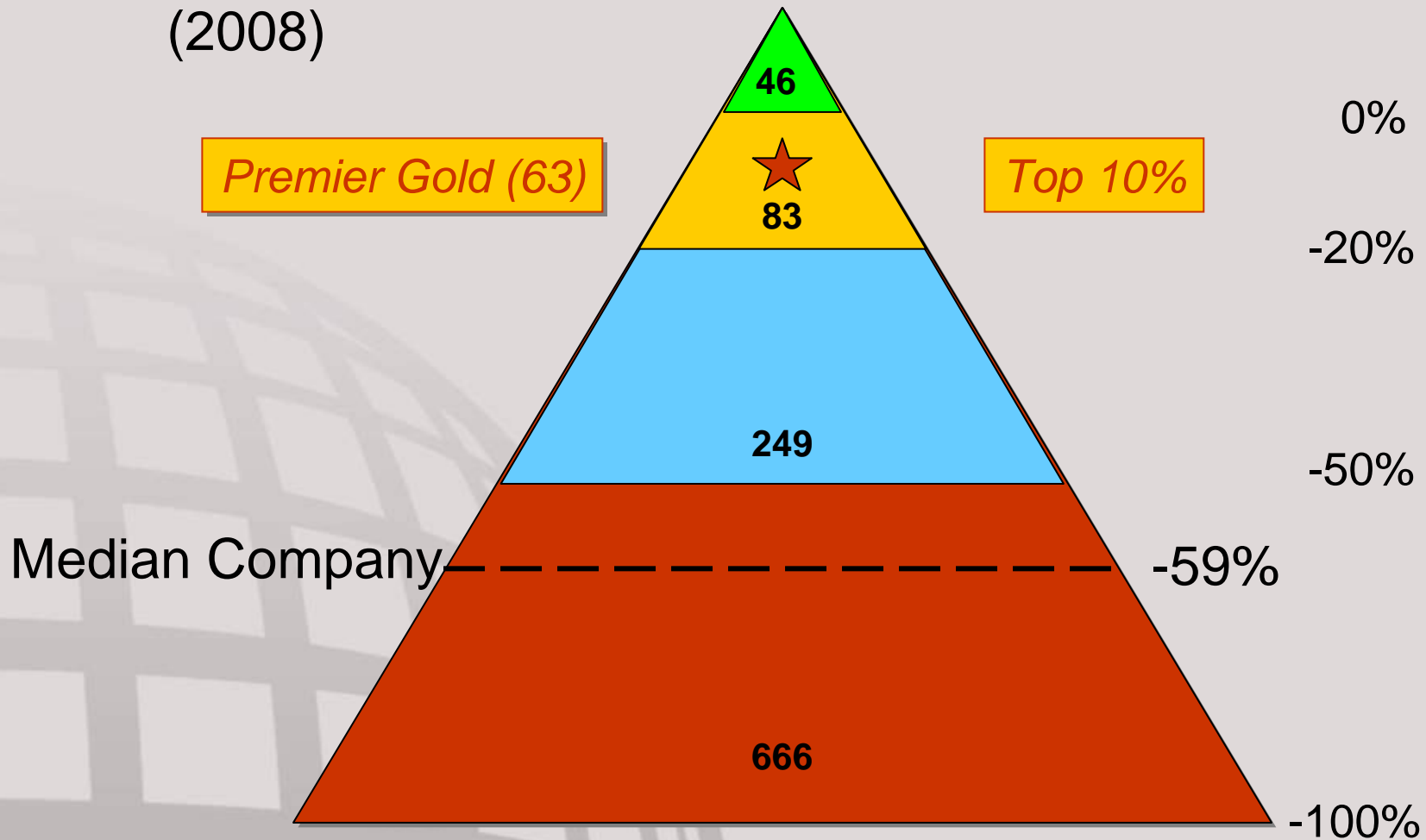


# Our Share Price Performance



# Share Price Performance vs Our Peers

(2008)



# ***2008 – A Year of Opportunity***

***Leveraged Red Lake assets***



***Aggressive Exploration***



***Share price support***



***Cash position***





# ***Premier Gold Mines Ltd***

***A World of Opportunity***

**Symbol: PG**

**Exchange: TSX**

**[www.premiergoldmines.com](http://www.premiergoldmines.com)**

This presentation may contain forward-looking statements that may involve a number of risks and uncertainties. Actual events or results could differ materially from the Company's expectations or projections.